

Type	No.	Material	Weight	Entrance	Dimensions (L x W x D)	Environmental class
Kingfisher nesting wall	IJSVW1	Concrete C60/75	335 kg	3x 100 mm	100 x 100 x 50 cm	XA3

Installation instructions

Requirements:

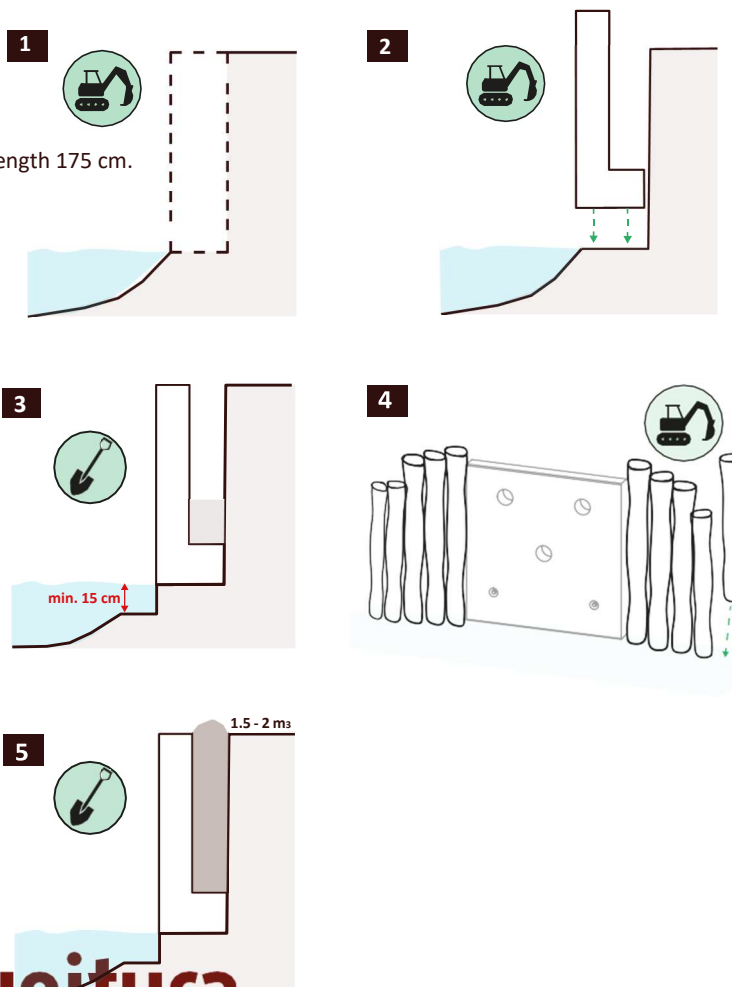
- Crane with a minimum lifting capacity of 500 kg.
- Approximately 1.5 to 2 m³ of additional soil.
- Optional: approximately 10 poles as soil retaining supports, length 175 cm.

Position: Choose a suitable location for the kingfisher nesting wall, preferably between trees or shrubs, and clear sufficient space. Prune or cut away branches if necessary.

Installation:

1. Use the crane to level the section of bank at the waterline. Set aside the removed turf; it will be reused later.
2. Attach lifting eyes to the retaining wall and position the wall with the crane, ensuring that it stands vertically.
3. Excavate the soil in front of the wall until there is at least 15 cm of water. Place the excavated soil behind the wall.
4. Drive 5 poles into the ground on both sides of the wall until they are secure. (This step is optional)
5. Fill the space behind the wall with the supplied soil and compact it as you go. Finish the top of the soil slightly convex to allow for settlement.

Finishing: Fill the holes at the front with soil and use the turf set aside earlier to secure the edges. Camouflage the soil with leaves if required.





Project-specific requirements and the Dutch Decree on Buildings in the Living Environment (Bbl)

Project-specific requirements and the guidelines of the Dutch Decree on Buildings in the Living Environment (Bbl) must be followed at all times.



Construction

Specific situations, building systems or prefabricated structures must always be handled in consultation with, and on the advice of, the manufacturer and the project-specific consultant. This includes advice on construction, fire safety and building physics.



Inspection and repair

The provision must be inspected once every 2 years. Check the structural parts and check for any damage to and around the provision. Repair any damage and touch up the water-repellent coating where necessary.