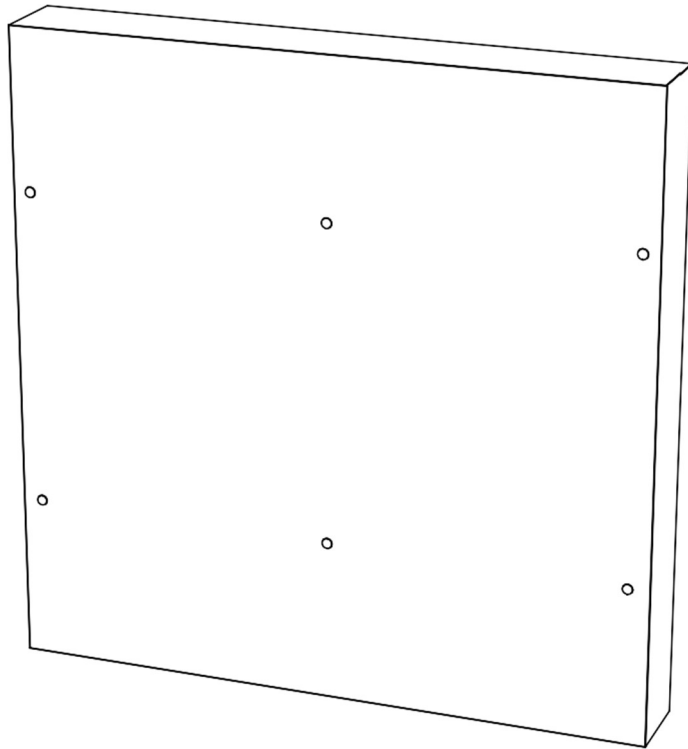


Product data, installation & maintenance

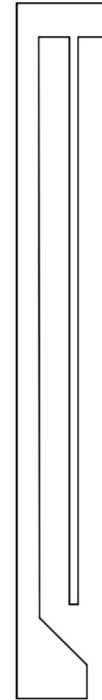
Bat wall module - VMWM1, VMWM2 & VMWM3



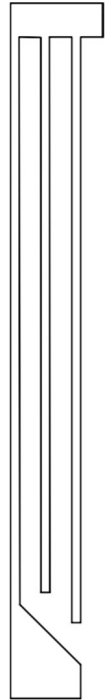
VMWM1



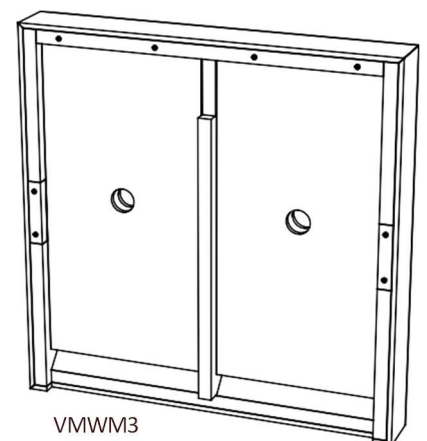
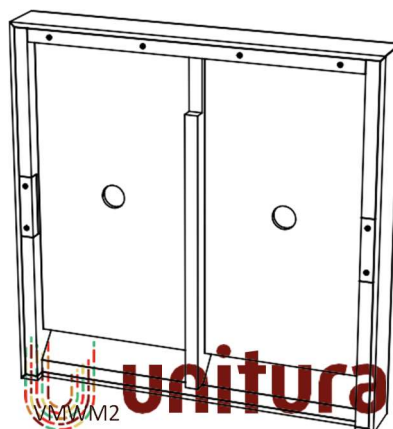
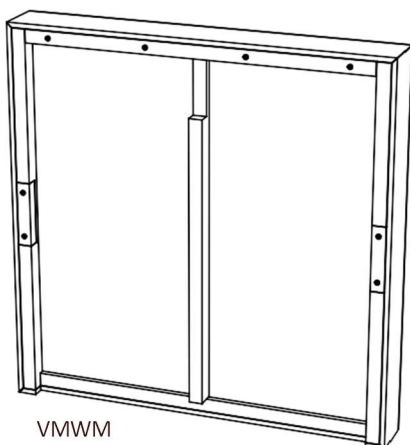
VMWM2



VMWM3



Type	No.	Material	Layers	Weight	External dimensions (H x L)	External depth	Internal depth
Bat box	VMWM1	XPS, mortar, spray cork, timber	1 layer	12 kg	80 x 80 cm	10,5 10.5 cm	1 x 35 mm
	VMWM2	XPS, mortar, spray cork, timber	2 layers	14 kg	80 x 80 cm	10,5 10.5 cm	2 x 35 mm
	VMWM3	XPS, mortar, spray cork, timber	3 layers	14 kg	80 x 80 cm	10,5 10.5 cm	3 x 25 mm

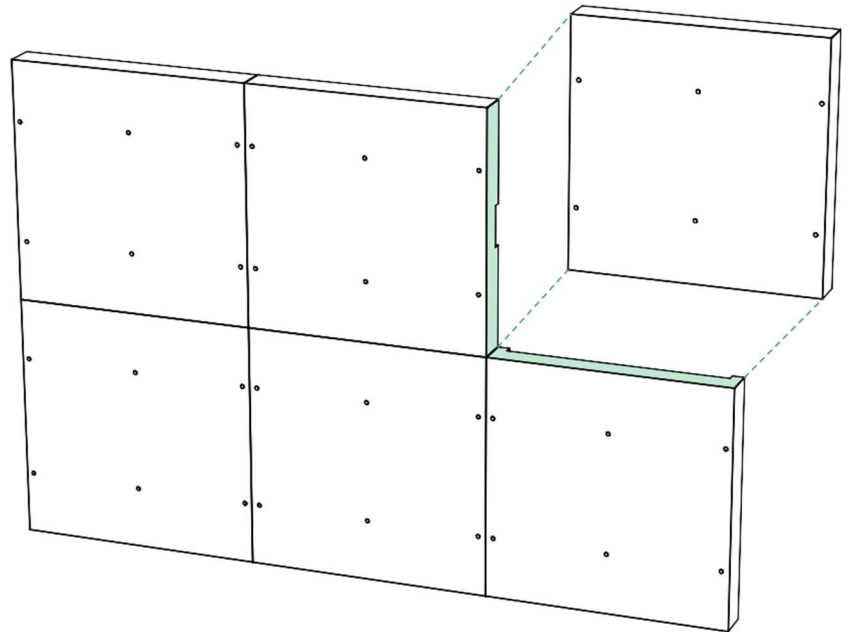


Connecting boxes

2/5

1 Connection options

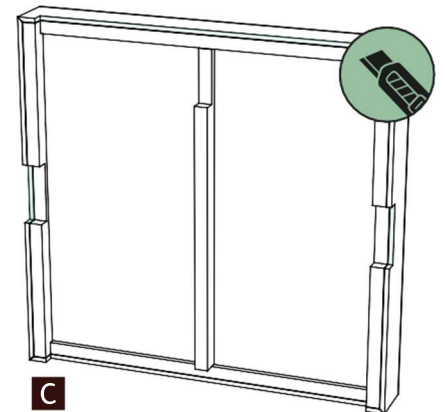
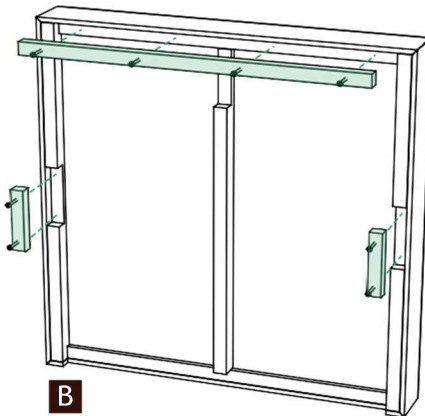
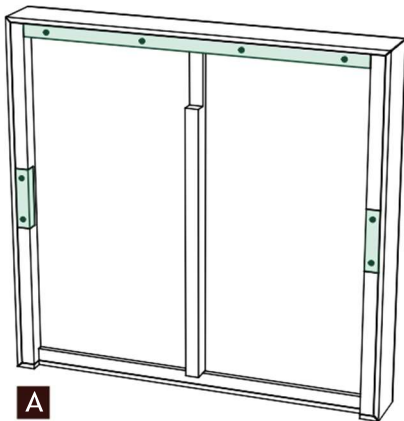
The boxes can be connected to each other in all directions. When boxes with only 1 layer (VMWM1) are used, we recommend placing these boxes at the top of the configuration so that no draught can enter them.



2 Connecting boxes

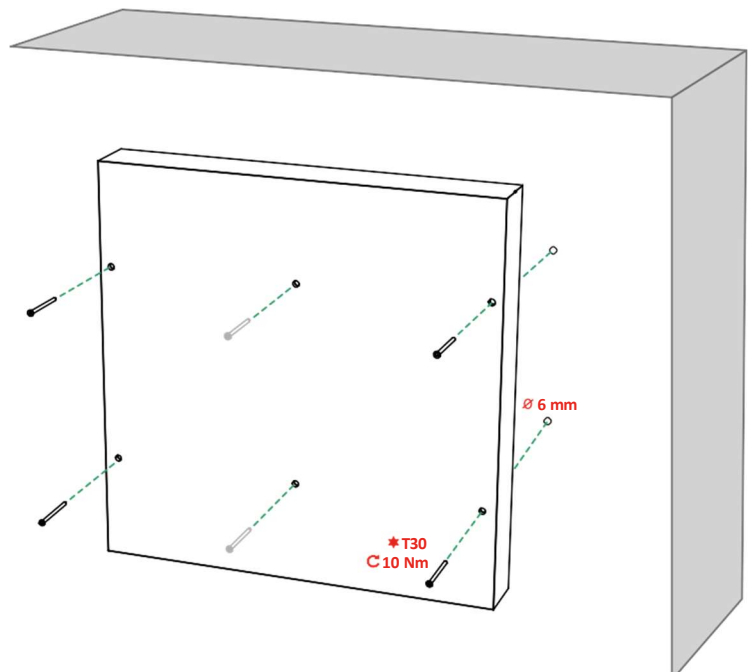
When boxes are connected, the openings of the connected boxes must be cleared.

- Unscrew the slats.
- Remove the slats.
- Use a knife to remove the edges so the openings are clear.



3 Installation

- Mark the positions of the holes of the box on the external wall*.
- Drill the holes in the external wall with a masonry drill bit (6 mm) (not in the joints).
- Install the box using the supplied screws (T30)*.
- Screw the supplied cover caps into the 6 holes to finish.



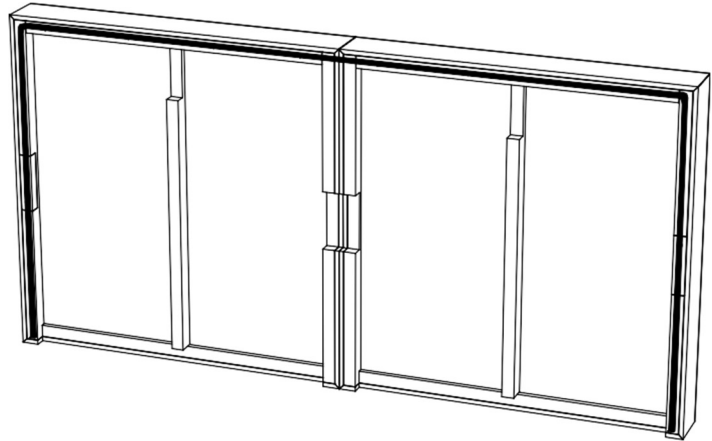
*When used without cladding, only the 4 outer fixing points are required.

*Wall plugs are not required.

*This is based on installation on masonry or mineral walls.

4 Expanding sealing tape

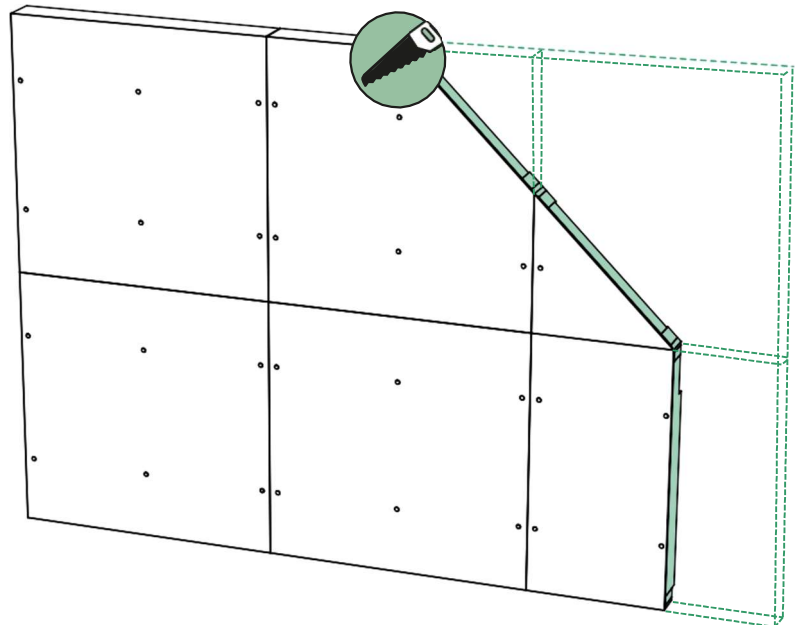
Expanding sealing tape is supplied with each box. Ensure that it is fitted along all outer edges. When connecting several boxes, this is only required along the outer edges as shown.

**5 Bespoke adjustment**

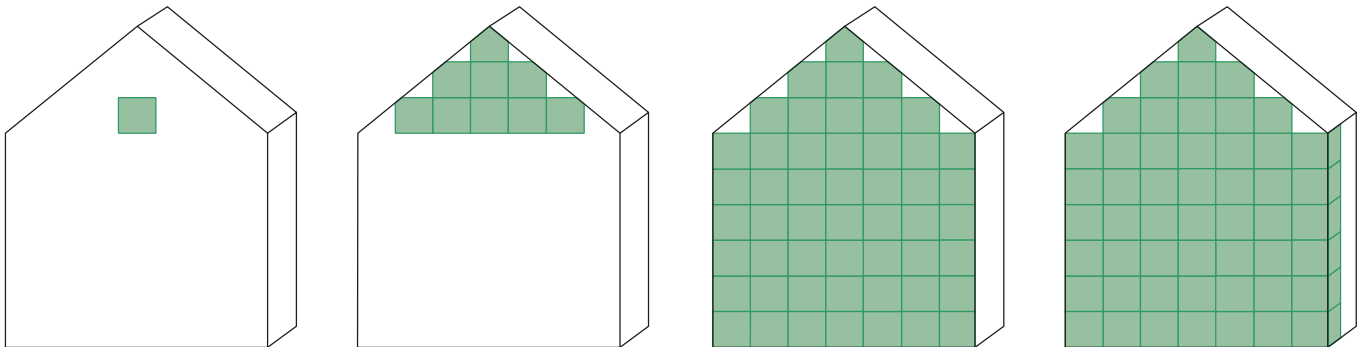
The boxes can be adjusted to size, for example when installed below a ridge.

1. Mark the part of the box that must be removed.
2. Use a saw to cut through the support beams and the inner layers of the box.
3. If necessary, cover battens can be placed on the exposed sides. Additional support beams can also be added for reinforcement.
4. For the finish, install cladding over the box. Cladding is project-specific*.

*Fixings and cladding to be determined. These are not supplied.



The boxes can be connected in a modular way, from a single box to a complete facade.



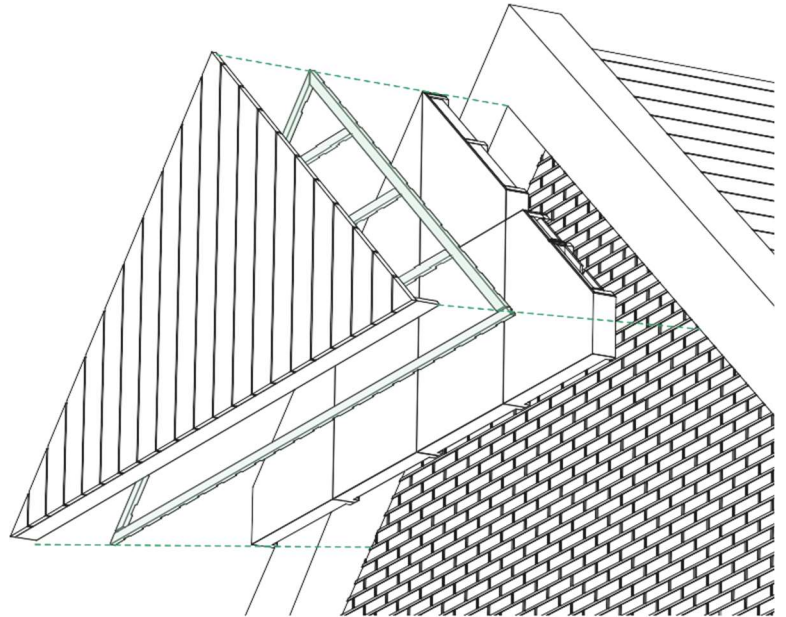
6 Application with cladding

If cladding is installed over the bat boxes, a strong frame must first be made on the bat boxes using tile battens*. Ensure that the cladding is installed in accordance with the instructions of the cladding manufacturer/supplier. When finishing the underside of the boxes, the access slots must be kept clear.

*The tile battens are not supplied.

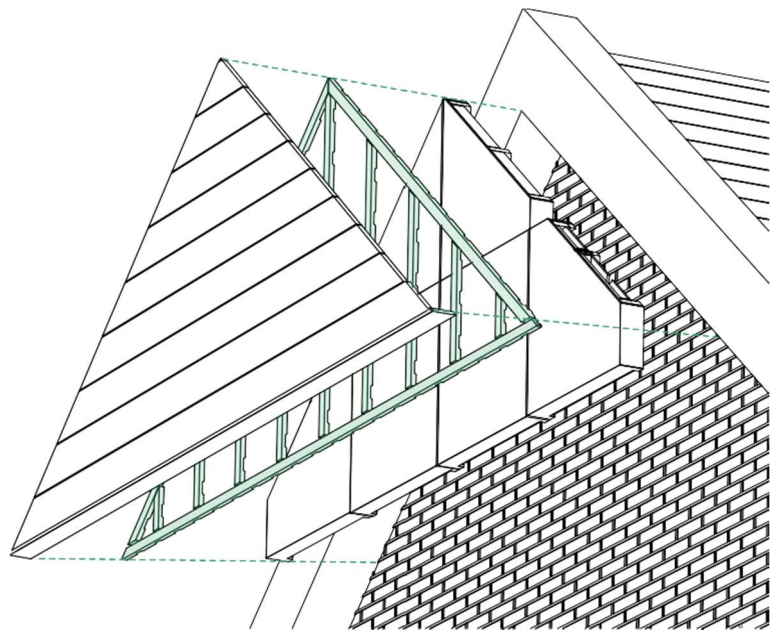
A Vertical

For vertical cladding, the tile battens must be fixed horizontally. The distance between the battens is then 40 cm.



B Horizontal

For horizontal cladding, the tile battens must be fixed to the vertical battens in the timber frame of the bat boxes. The distance between the battens is approximately 40 cm.



Additional advice



Project-specific requirements and the Dutch Decree on Buildings in the Living Environment (Bbl)

Project-specific requirements and the guidelines of the Dutch Decree on Buildings in the Living Environment (Bbl) must be followed at all times.



Construction

Installation of the product on the outer leaf must always be carried out in accordance with the advice of the manufacturer and the project-specific consultant. This includes advice on construction, fire safety and building physics.



In accordance with advice

Installation of cladding must always be carried out in accordance with the advice of the cladding supplier/manufacturer and must always be done in consultation with the project-specific consultant.

Maintenance



Inspection and repair

The provision must be inspected once every 2 years. Check the wall anchoring and other structural parts. Check for cracking and any damage to and around the provision. Also check the water-repellent coating. Repair any damage and touch up the water-repellent coating.